





Build your interactive DestinE story

Second Destination Earth User eXchange

13-14 November 2023



AGENDA

- ▶ Vision
- ▶ Solution
- ▶ Service



ABOUT US

Alia Space Systems has been working in **space** since **2003**



Customers:



Funded by the European Union

Destination Earth

Implemented by



VISION

MAKE DATA **UNDERSTANDABLE**



Funded by
the European Union

Destination Earth

Implemented by



VISION

CITIZENS

POLICY MAKERS

MAKE DATA **UNDERSTANDABLE**

STORYTELLERS



VISION

EXPLORE

VISUALIZE

MAKE DATA **UNDERSTANDABLE**

INTERACT



VISION

TELL A STORY WITH DATA



MAKE DATA UNDERSTANDABLE

How can I use it?



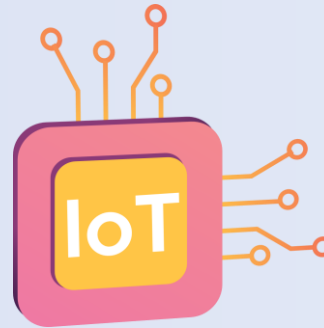
Satellite



GIS



Statistical



Internet of Things



Climate

MAKE DATA UNDERSTANDABLE

What can **Alia** do with data?

- ▶ Manage
- ▶ Collect
- ▶ Process
- ▶ Expose

What can **users** do with **DEA**?

- ▶ Explore
- ▶ Interact
- ▶ Visualize
- ▶ Tell a story with data



SOLUTION

DEA is:

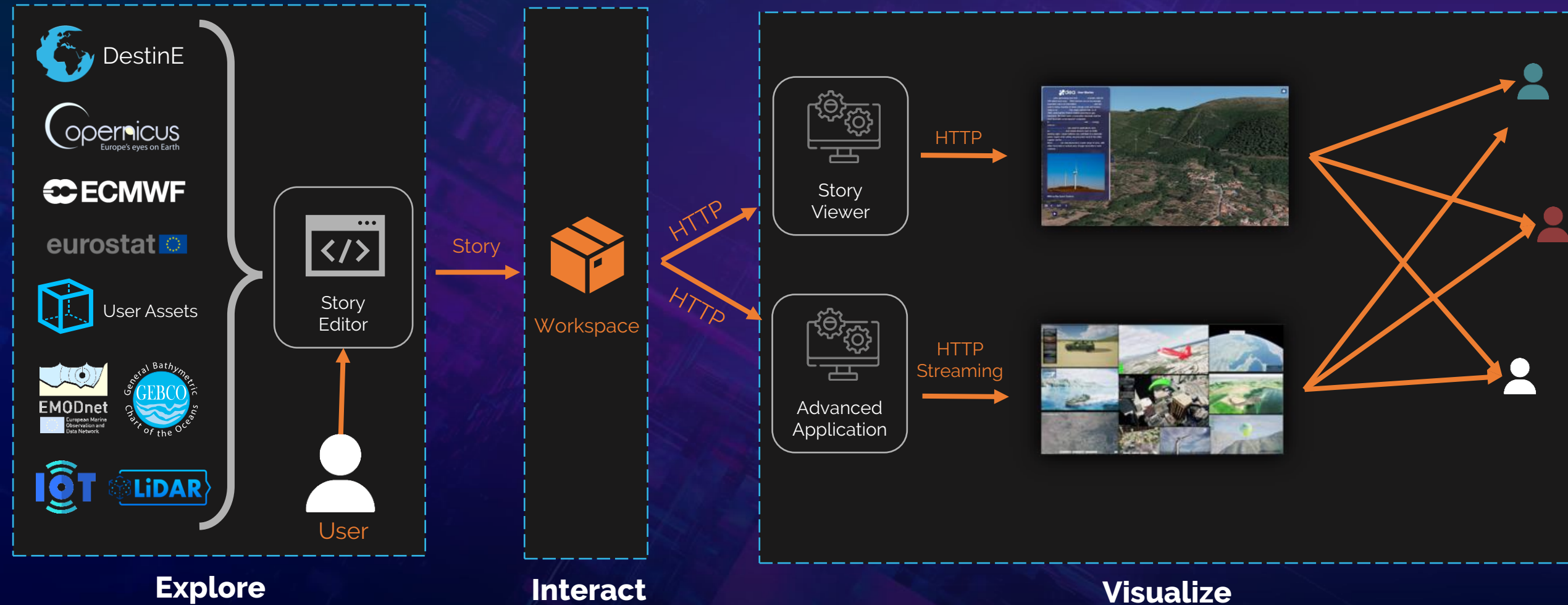
- ▶ Content creation **service**
- ▶ **No-code** platform

DEA allows users to make their own **DestinE Data Storytelling** thanks to:

- ▶ Engaging data **visualizations**
- ▶ **Interactive** stories design
- ▶ Data **exploration**



SOLUTION



Explore

Interact

Visualize

STORY

The **Story** is created in the web **Story Editor** and run in the web **Story Viewer** and in the **Advanced Application**

Story **Editor**Story Metadata +
AssetsStory **Viewer**

Advanced Application

STORY EDITOR

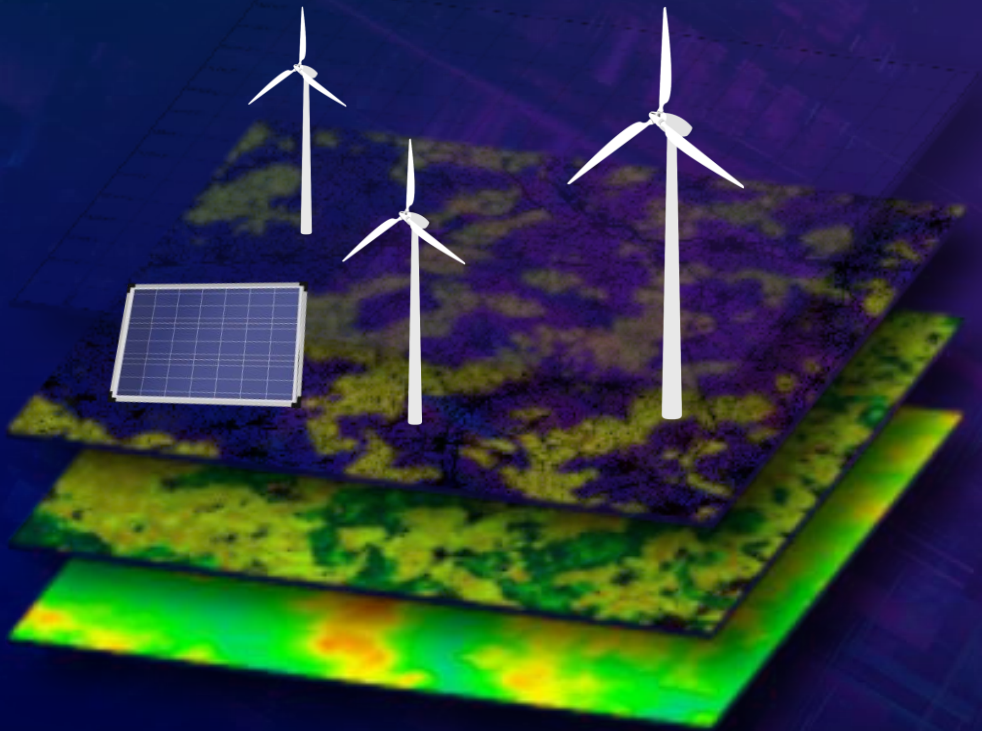
Slides

Rich text format editor

Assets

STORY METADATA

The **Story** metadata includes all the resources used into the scene:



```
ID: <identifier>
Slides: {
  AOI: [<area of interest>]
  TimeRange: [<time range>]
  Layers: [<EO data sources>]
  3DAssets: [<3D assets>]
}
...
...
```


STORY VIEWER

Story cover



Slides index

QR Code
(for sharing)

ADVANCED APPLICATION

Weather conditions

The screenshot displays a 3D visualization of a wind turbine in a field. The interface includes several key components:

- Top Left:** 'dea digital earth architecture' logo and a compass rose showing North (N).
- Top Right:** 'esa' logo.
- Left Panel:** A 'Weather conditions' section with a digital clock at 12:00:00 and a vertical stack of weather icons (sun, clouds, rain, snow, wind) with corresponding sliders.
- Top Center:** A red-bordered box containing asset details: ID: Big Turbine 01, Temperature: 23.46 °C, Rotor Speed: 3.61, and Energy Output: 75.52 Kw.
- Right Panel:** A red-bordered box showing a detailed view of 'Big Turbine 01', including a small image of the turbine, its name, a maintenance date of 06/05/2021, a 'DETAILS' button, and a 'Service Status: Operative' indicator.
- Bottom Left:** An 'Asset List' section titled 'INFRASTRUCTURES' with a sub-section 'GREEN ENERGY' listing 'Field Turbine 04', 'Big Turbine 05', 'Solar Panel', 'Big Turbine 02', and 'Field Turbine 01'.
- Bottom:** A navigation bar with 'HOME' and 'INFRASTRUCTURES' buttons, and an 'EXIT' button in the bottom right corner.

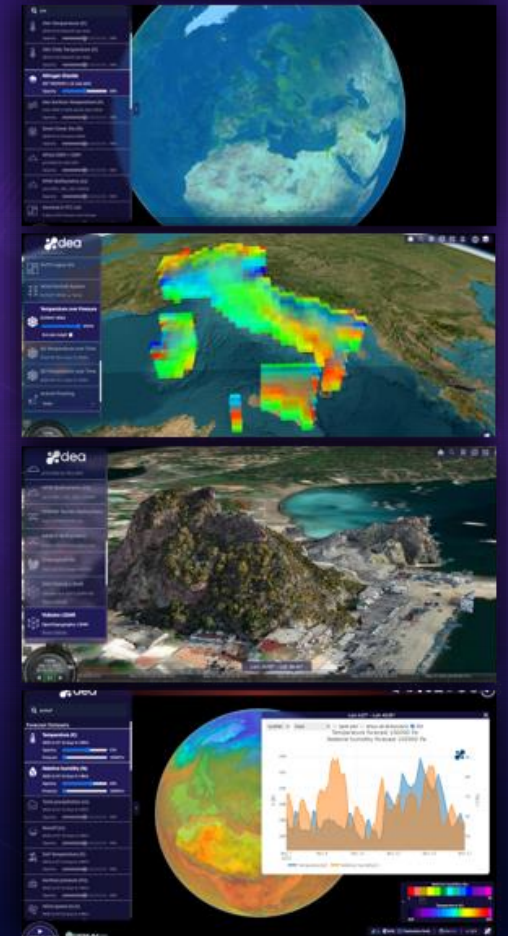
Asset details

Asset List

Service

DEA is an **interactive visualization** service where users can:

- ▶ **Explore** default datasets on global or local scale, as time series or volumetric rendering
- ▶ **Request** data on a specific area and time range
- ▶ Add their **own data**
- ▶ Create engaging **user stories** with data, plots, images, text



On DEA Road

Kick-Off
Jan 2023



DESP Readiness for
integration
Dec 2023



Ops Ramp-Up



Web App Prototype
Jun 2023



Ops Readiness
Jun 2024



User Stories

<https://dea.alia-space.com>



Build your story

