

DESTINATION EARTH CORE SERVICE PLATFORM



Destination Earth

Funded by
the European Union



Implemented by



WHAT IS THE DESP?

Barbara Borgia, Serco



PLATFORM FRAMEWORK SOLUTION TOPICS

- Platform services overview
- Implementation Plan
- DESP Use Cases & the Platform



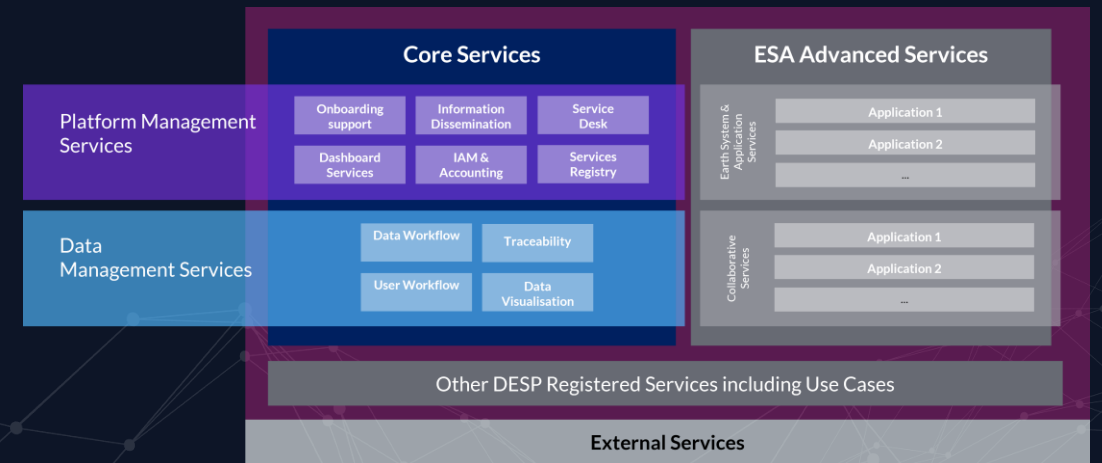
DESTINE CORE SERVICE PLATFORM OVERVIEW

- PLATFORM MANAGEMENT SERVICES

Trusted entities within the ecosystem, competing in creating a community around services, establishing trust among participants.

- DATA MANAGEMENT SERVICES

All services allowing consumers to access data and applications.



TECHNICAL OVERVIEW



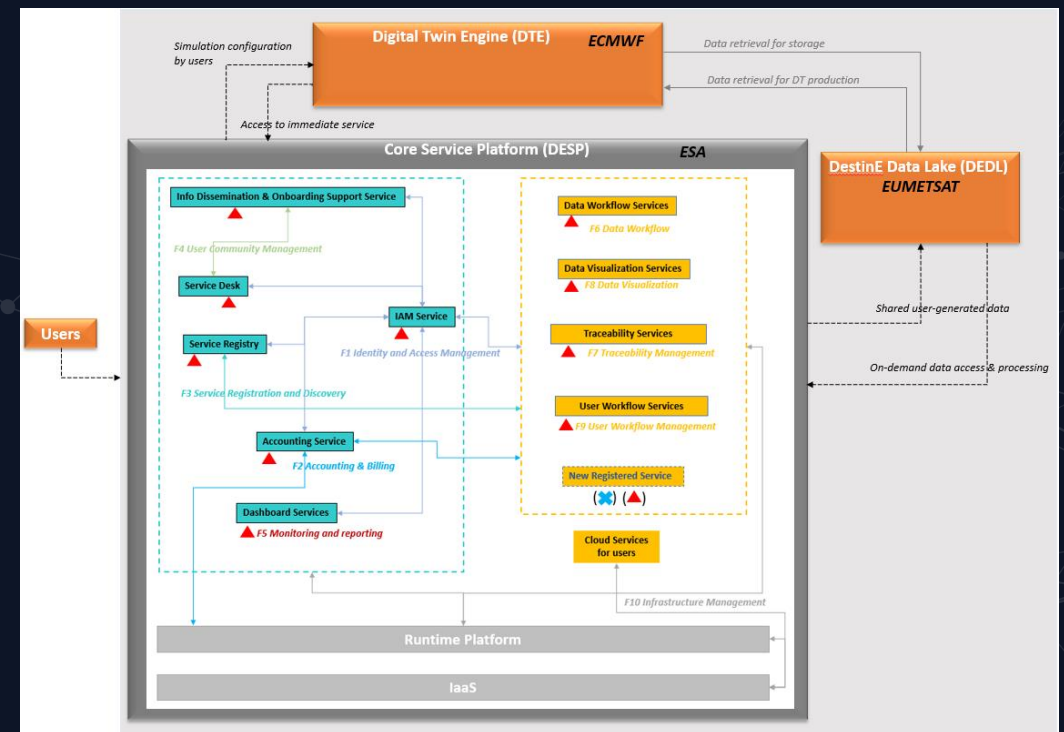
TECHNICAL OVERVIEW

USERS LANDING ON DESP

can discover the DestinE Ecosystem, thanks to informative pages and engaging material on DestinE activities and services.

DESP will interface with:

- ECMWF Digital Twin Engine
- EUMETSAT Data Lake



USER COMMUNITY TOPOLOGY



UNREGISTERED USER

Access limited to general public services, Service Desk and Service Registry.



DESP ADMINISTRATOR

Managing the configuration elements of the DESP Core Services with administrative privileges.



DESP REGISTERED USER

Users registered in the IAM service:

- **Standard users:**
self-registration performed
- **Registered Service Providers:**
providers of services listed in the DESP Service Registry
- **Tenant Users:**
Standard Users providing and/or consuming resources/services within a DESP Tenant



DESP FEDERATED USER

Users whose personal data are provided by an external Identity Provider and may be propagated to the IAM Service.

They are enabled to access all the DESP features, functions and services freely accessible.

PLATFORM SERVICES OVERVIEW



PLATFORM MANAGEMENT SERVICES

IAM AND SERVICE REGISTRY



IDENTITY AND ACCESS MANAGEMENT

Unified DESP user management service, granting access to all authorised DESP Registered Services based on the same digital identity

- Allows Users to:
 - Register and manage user profiles
 - Authenticate in DESP with credentials from external Identity Providers (IDP Federation)
 - Authenticate through Single Sign On (Service Federation)
- Allows Service Providers to:
 - allocate Service resources to projects or users' activities



SERVICE REGISTRY

- Catalogue of all applications and services, integrated in DESP, including the DESP Core Services
- Exposes Service end-points and Price list
- Entry point for the Onboarding process

SERVICE REGISTRY

The comprehensive catalogue of all services available on the DESP platform. You can easily discover and search all entries, conveniently organised by thematic areas. In addition, the Service Registry allows the registration of new services in DESP, through our straightforward [onboarding](#) procedure.

This will empower you to enhance your engagement with our community and actively contribute to the DESP ecosystem.

PLATFORM MANAGEMENT SERVICES

HIGH-LEVEL OVERVIEW



DASHBOARD SERVICES

Provides **live information** about the DESP usage, performance and status of the DESP Registered Services



ACCOUNTING

- Allows Users to monitor their consumption of services resources



INFORMATION DISSEMINATION

- Take cares of the Web information Presence layer. Supports Users and Services providing **up-to-date and accurate information** on DESP Services.
- Provides engineering support for new Services **integrating in DESP**



ORCHESTRATION PLATFORM (RUNTIME)

- Common layer for the deployment and operation of all the DESP services.
- Integrates the cloud infrastructure layer
- Security management capabilities



SPECIALISED SERVICE DESK

Supports Users and Services with thematic discussion forums, issue management, ticketing and technical material and information.

DATA MANAGEMENT SERVICES

DATA WORKFLOW SERVICE

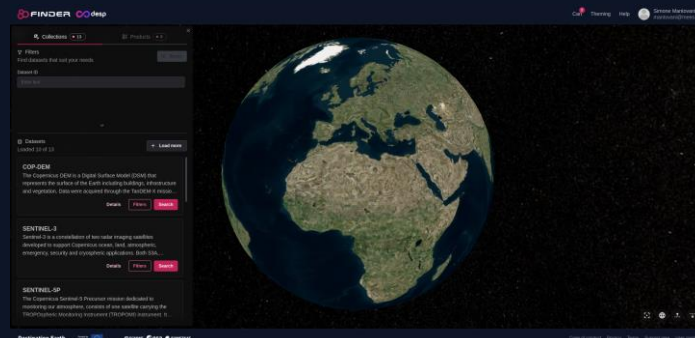
Entry point to access data available from

- the DestinE Data Lake including simulations generated by the DestinE Digital Twins
- federated data sources

It implements the DESP smart cache

Available interfaces

- API
 - Harmonised Data Access
 - OpenSearch
- GUI

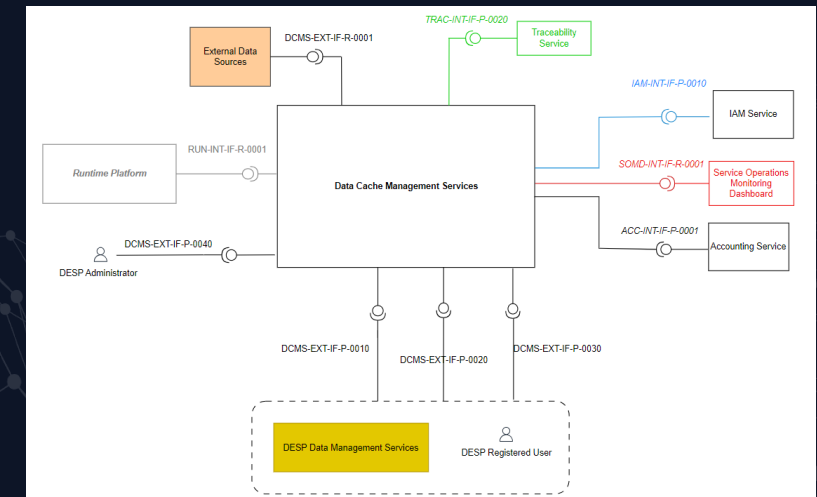


DATA CACHE MNG SERVICE

Rolling archive storing data retrieved from DESP data sources (as per DESP portfolio).

Available interfaces

- API
 - S3
 - STAC



DATA MANAGEMENT SERVICES

USER WORKFLOW SERVICES

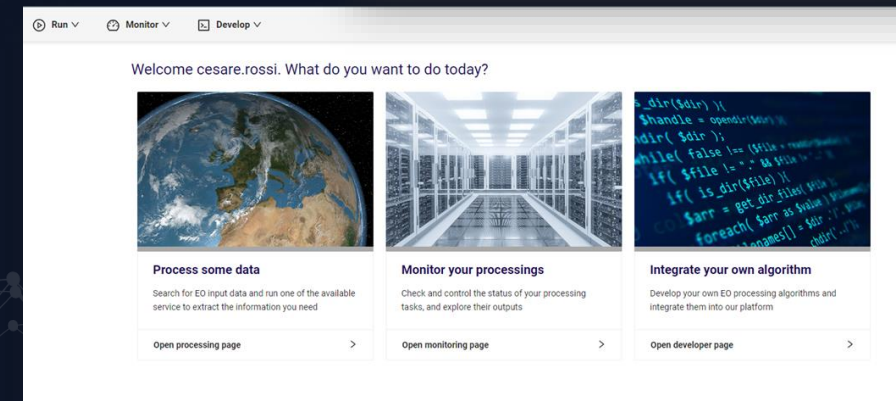
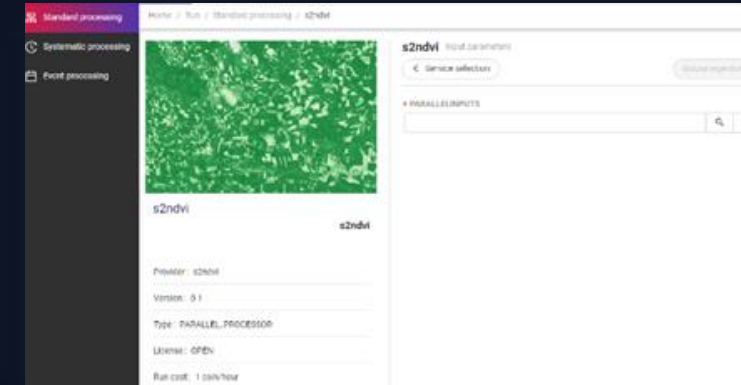
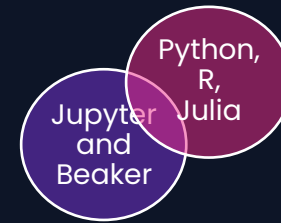
DEVELOPMENT ENVIRONMENT

- Ready-to-use user environments with pre-installed libraries
 - EO expert: GDAL, RASTERIO, proj
 - AI/ML expert: GDAL, RASTERIO, PyTorch, TensorFlow, etc.

- Add storage by attaching OVH containers

PROCESSING ENVIRONMENT

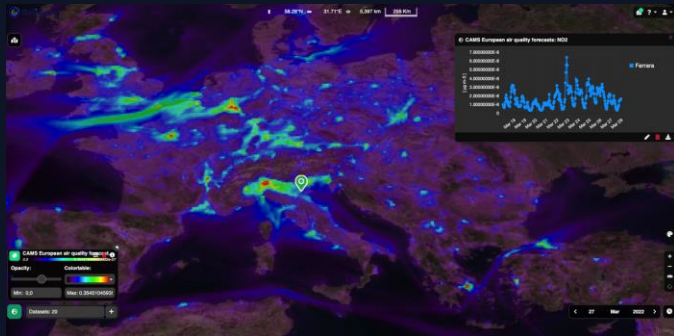
- Advanced processing service available via UI or API to create structure of the service implementing the algorithm via templating



DATA MANAGEMENT SERVICES

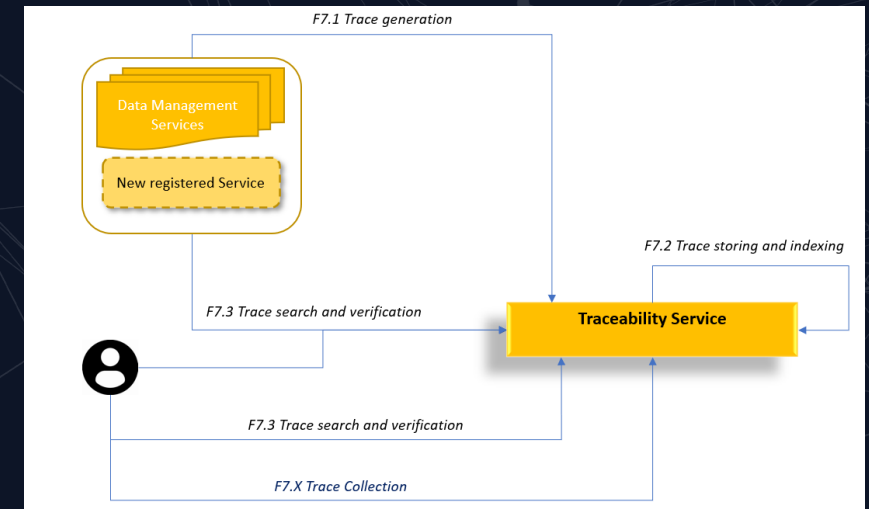
DATA VISUALISATION SERVICES

- **DESP Data visualisation** in 2D-3D-4D (timeseries)
 - Supports geotiff, netcdf, grib, shapefile, WMS, WMTS, etc
 - Data available on cache are pre-processed for visualization
- **User-generated Data visualisation** in 2D-3D-4D
 - For supported standard formats
- **Data Export** in various formats
- **Collaborative environments** and sharing capabilities



TRACEABILITY SERVICE

- DESP service tracing models, data and software
- Traceability Services guarantee that generated data and data exploitation software come from a certified actor (Data Provider/ Service Provider)
- Any DESP Registered User can generate and record unique traces by using the Traceability Service, via Traceability Client Tool.

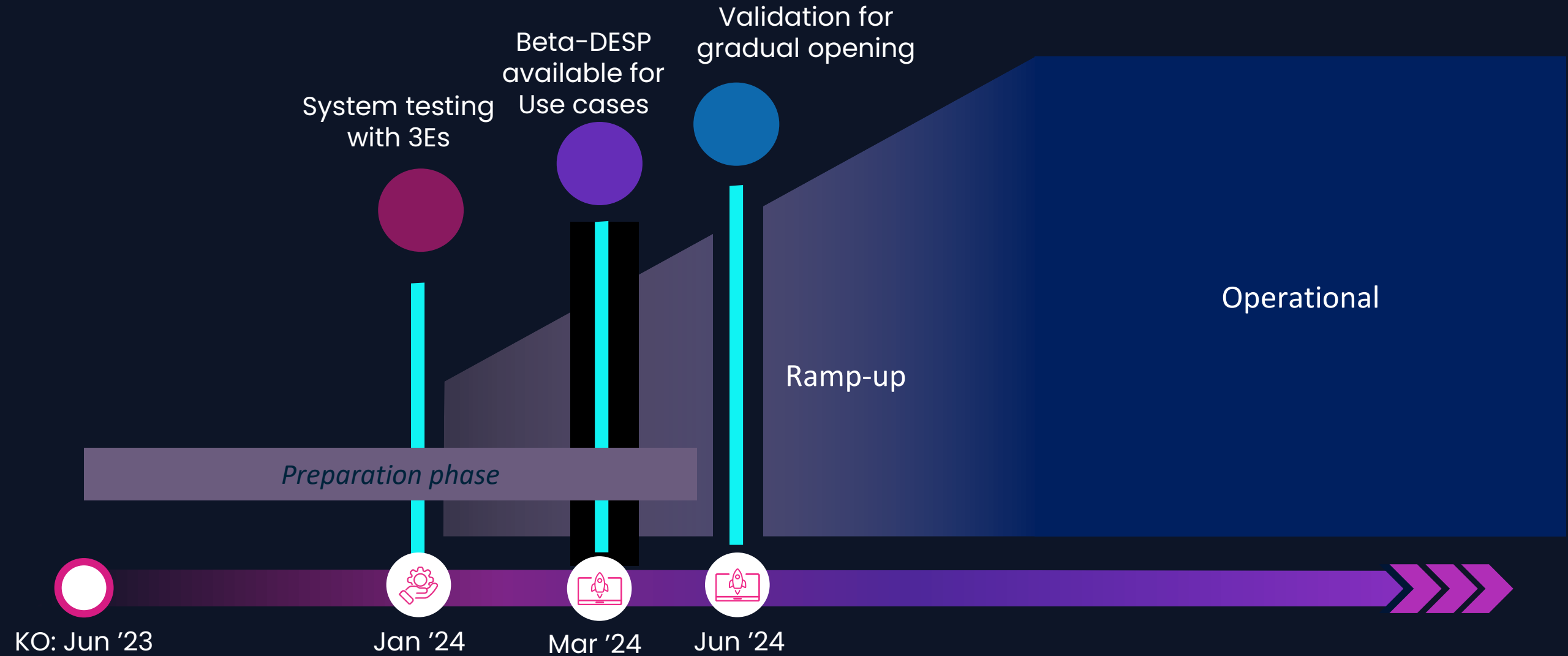


IMPLEMENTATION PLAN

DESP USE CASES & THE PLATFORM



DESP IMPLEMENTATION PLAN



DESP USE CASES INTEGRATION

- **Objective:**
 - validation of the platform
- **How:**
 - Share information on DESP integration approaches
 - Share technical documentation for integration in DESP
 - Set up the Beta-version of DESP for the User cases
 - Support the integration is a two-step approach
 - First batch of services available: IAM Service, Service Registry, Runtime Platform (March)
 - Dataset available: Sentinels + TBD (April)
 - Second batch of services available: all the others DESP core services
- **Feedback:**
 - Comments/proposals on the provided documentation
 - Recommendation for DESP improvements



DESTINATION EARTH CORE SERVICE PLATFORM

For info: barbara.borgia@serco.com

serco

ThalesAlenia
a Thales / Leonardo company
Space

CGI

expri^{via}

deimos
elec^{nor} group

MEEO⁸⁰

 aliaspace

 OVHcloud