

DestinE Platform

3RD DESTINATION EARTH USER EXCHANGE

DARMSTADT, 15-16 OCTOBER 2024

Alexis Longuet (alexis.longuet@serco.com)
Serco



Destination Earth

Funded by
the European Union



Implemented by





Destination Earth System testing



Gather early feedback from user community

2

weeks duration

12

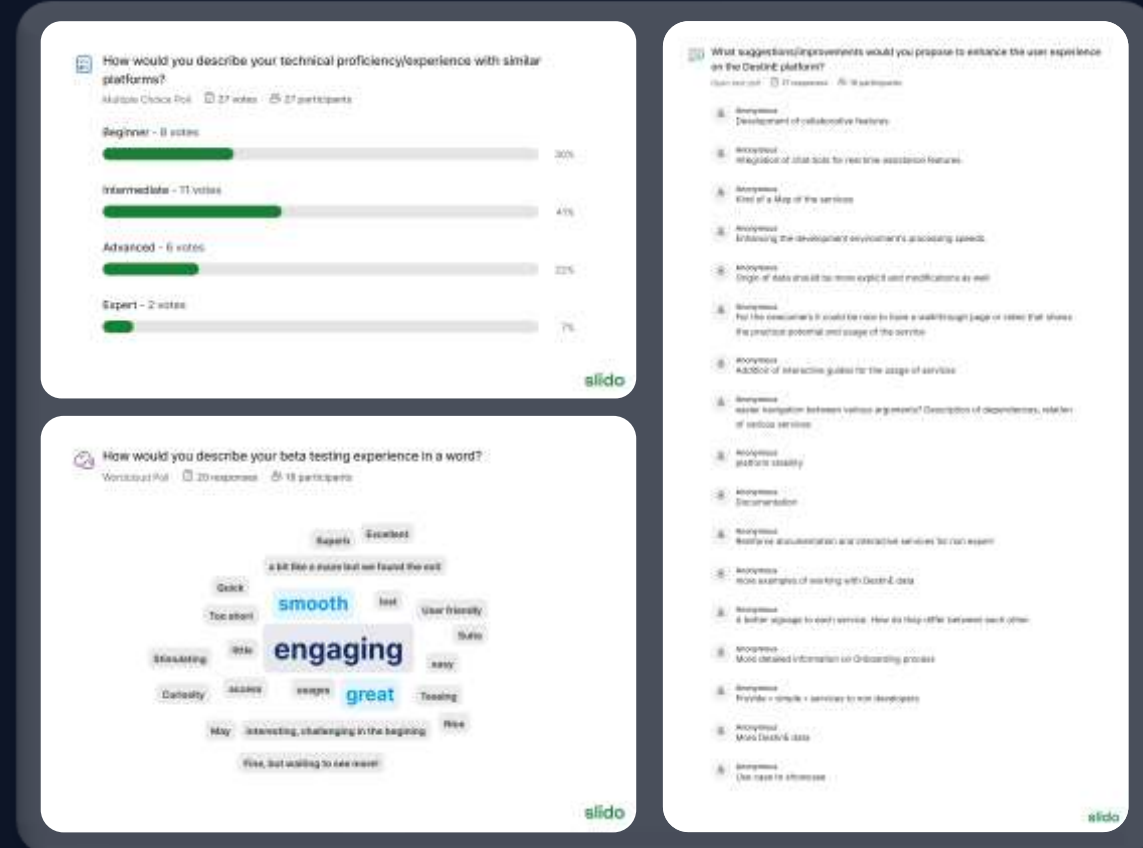
operational services

3,863

unique visitors

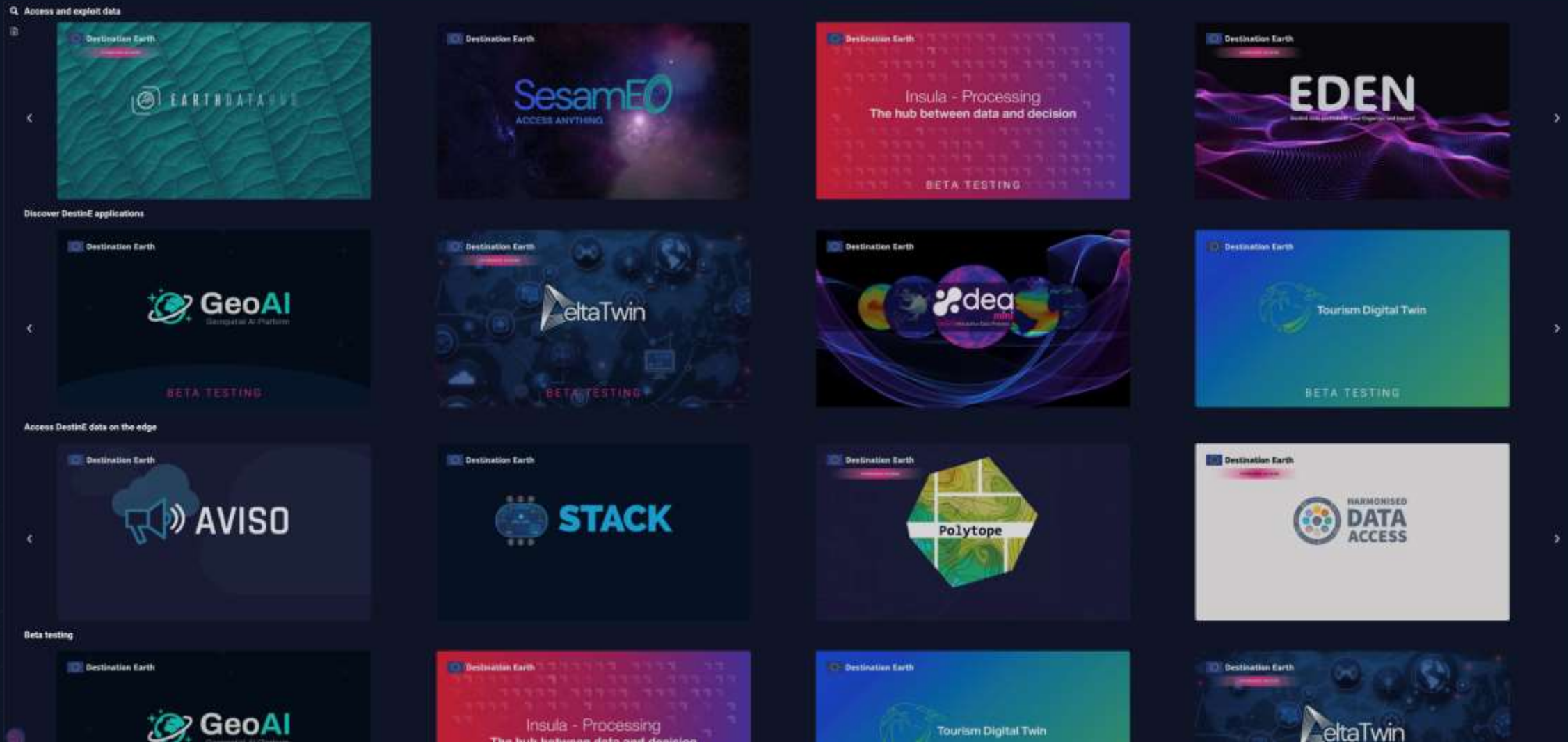
715

registered users



SERVICE REGISTRY

OCTOBER 2024 – 20 OPERATIONAL SERVICES



The screenshot displays a grid of 20 service cards within a web interface. The interface includes a search bar at the top left with the text "Access and exploit data". The cards are organized into four rows and five columns. Each card features a "Destination Earth" logo in the top left corner and a "BETA TESTING" label in the bottom right corner. The services shown are:

- Row 1: EARTHDATA, SesamEO (ACCESS ANYTHING), Insula - Processing (The hub between data and decision), EDEN (Build and govern your digital twin).
- Row 2: GeoAI (Geospatial AI Platform), eltaTwin, dea (Digital Earth Analytics), Tourism Digital Twin.
- Row 3: AVISO, STACK, Polytope, HARMONISED DATA ACCESS.
- Row 4: GeoAI, Insula - Processing (The hub between data and decision), Tourism Digital Twin, eltaTwin.

Register

Public registration **open to all**

Destination Earth User Access **Upgrade**



General public	+
Academics & industry	+
All countries public authorities	+
Selected EU, EFTA/EEA, UNCTAD/WHO countries	+

Destination Earth **User Access Policy** implementation

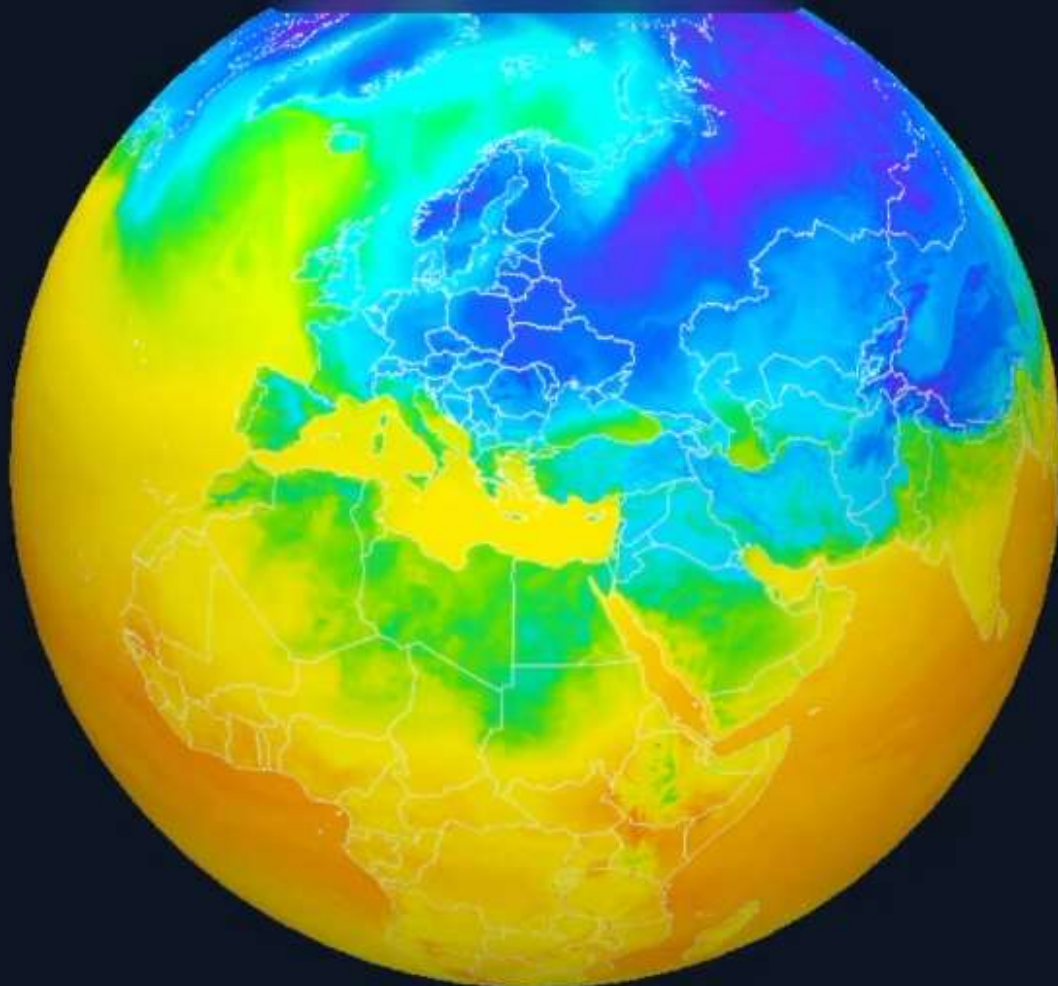
- Registered users can request Upgraded Access
- Selected user categories
- Access to advanced services

Apply for an Upgraded Access

Apply now for « **Upgraded Access** »

1 month of DestinE Climate DT (2025)

JAN FEB



2 metre temperature (°C)

-69 52

Powered by MeteoSwiss



DestinE Platform

Your gateway to a sustainable future

A unique ecosystem of services harnessing the power of Destination Earth.

Register

20

Services already available

Explore

3

Services coming soon

Explore





- **Increasing number of operational services**
 - DestinE Use Cases, DestinE Platform onboarding service
 - Advanced Applications and Services open calls and demonstrators
 - Horizon Europe, etc.



- **New features on the Platform**
 - ie. Public roadmap
 - Visibility on upcoming features and services
 - Contribute and impact évolutions
 - Public Dashboards
 - Resources available, attractiveness
 - Collaborative tools
 - Communication,



Training sessions: hands-on insights from selected services



“Interacting with the DestinE Platform and Edge services” session:

- Overview of the user journey on the platform
- Onboarding process



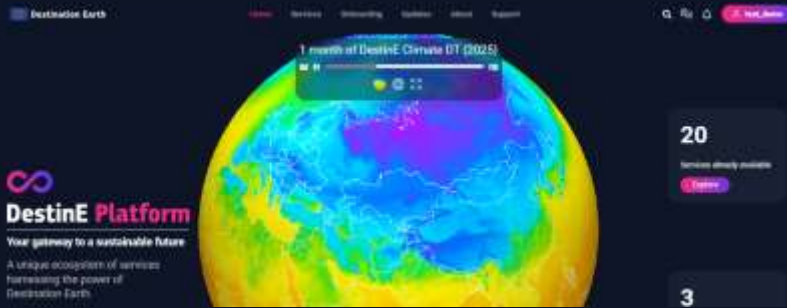
DestinE Community Forum

Poster session "How to join the DestinE Platform ecosystem?"

HOW TO JOIN THE ECOSYSTEM?

USERS

PLATFORM.DESTINE.EU



linkedin.com/company/destine-platform



SERVICE PROVIDERS

DESTINATION-EARTH.EU



ESASTAR-PUBLICATION-EXT.SSO.ESA.INT

