

The use of Local Digital Twins to evaluate the impact of mobility choices on air quality

Stijn Vranckx

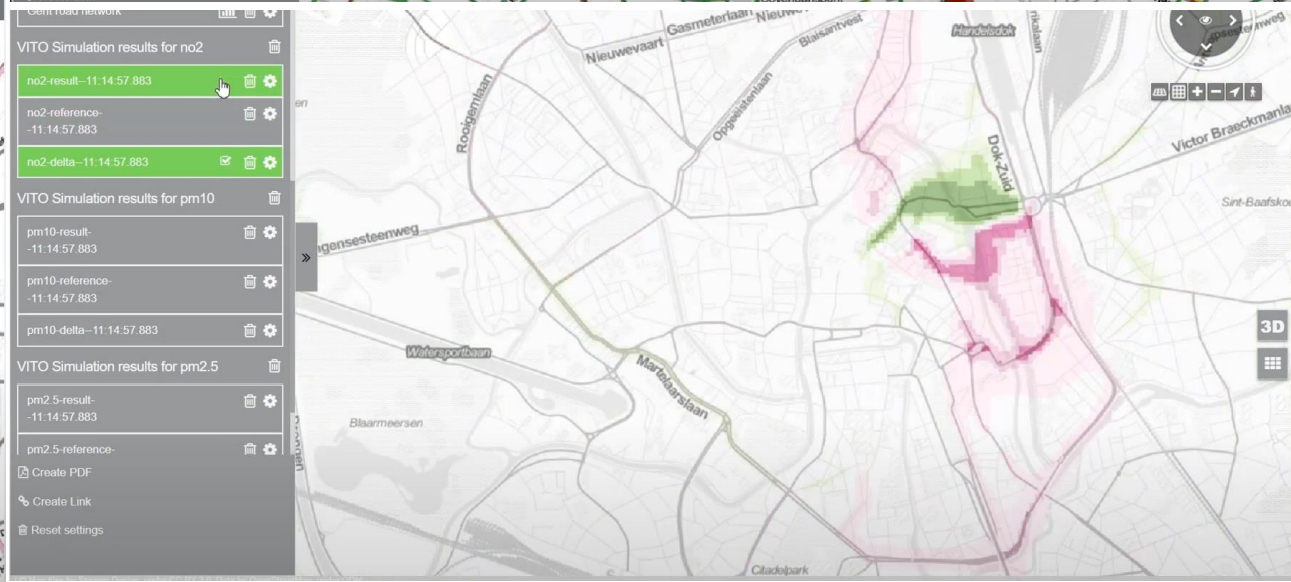
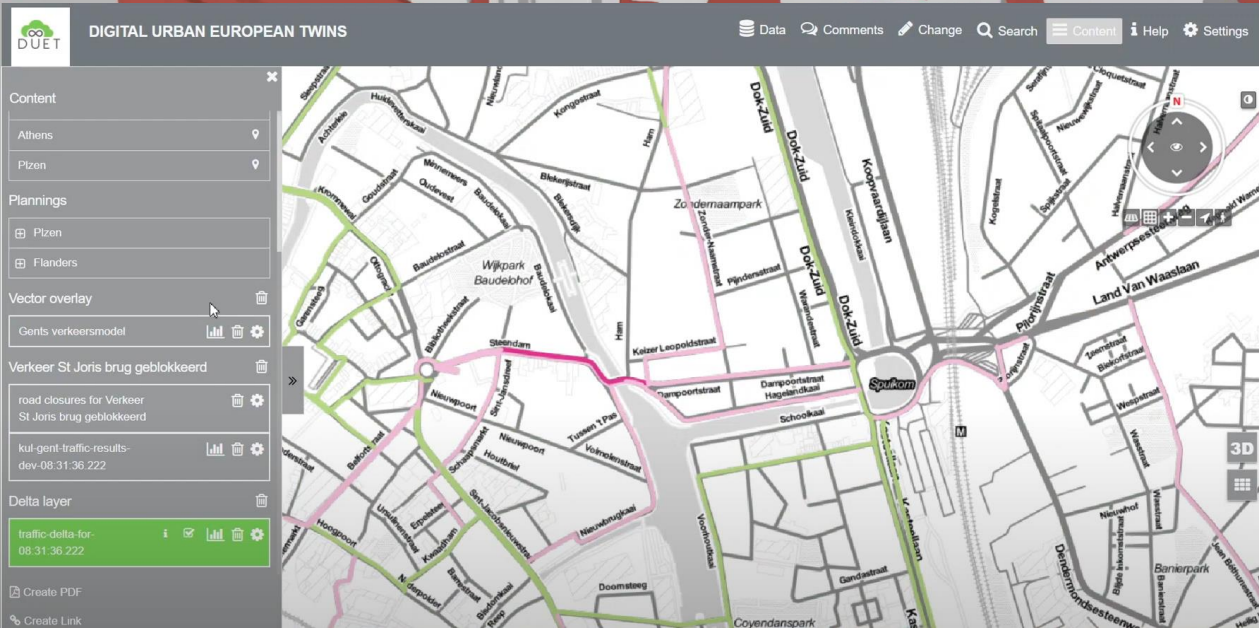
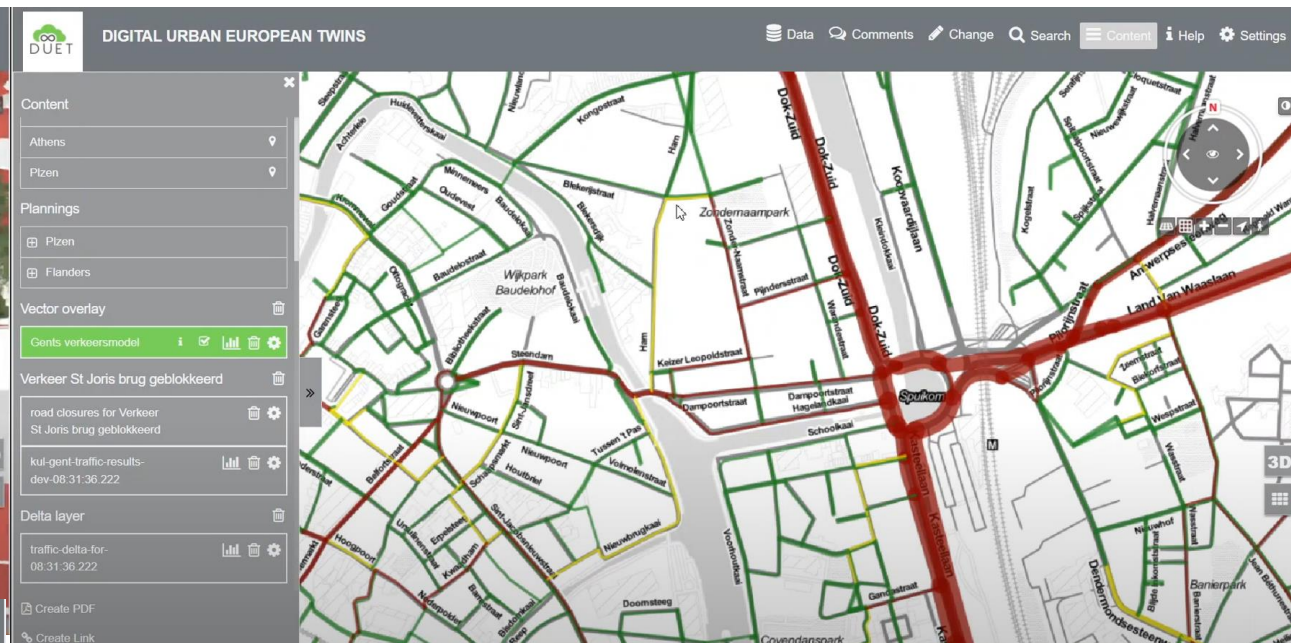
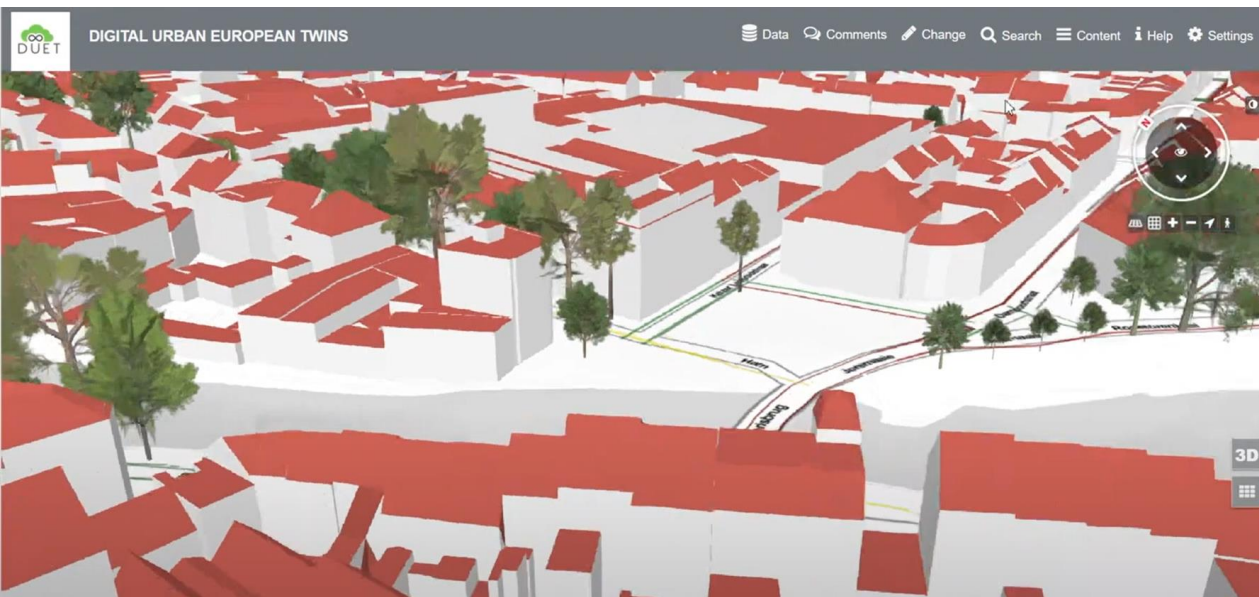


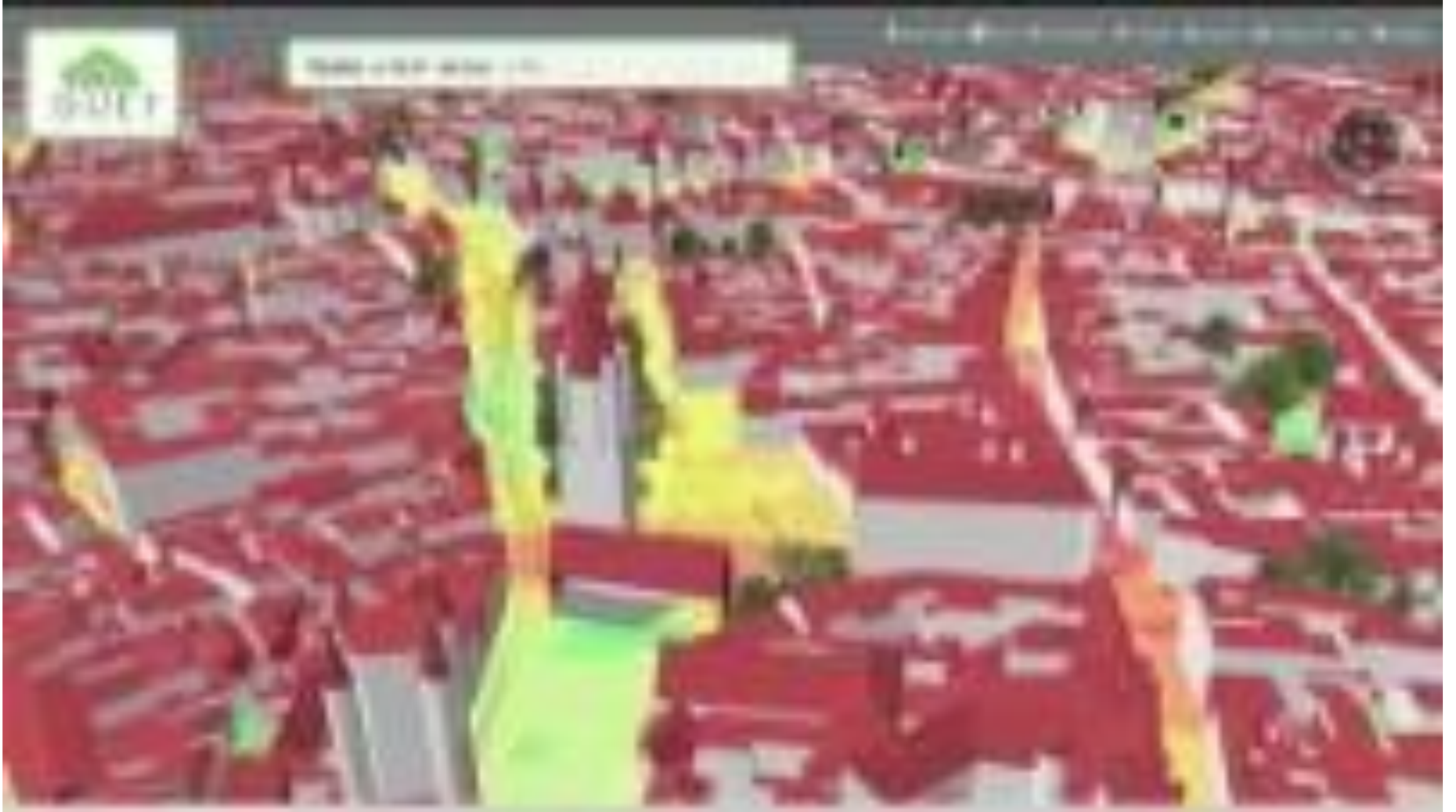
Co-funded by
the European Union



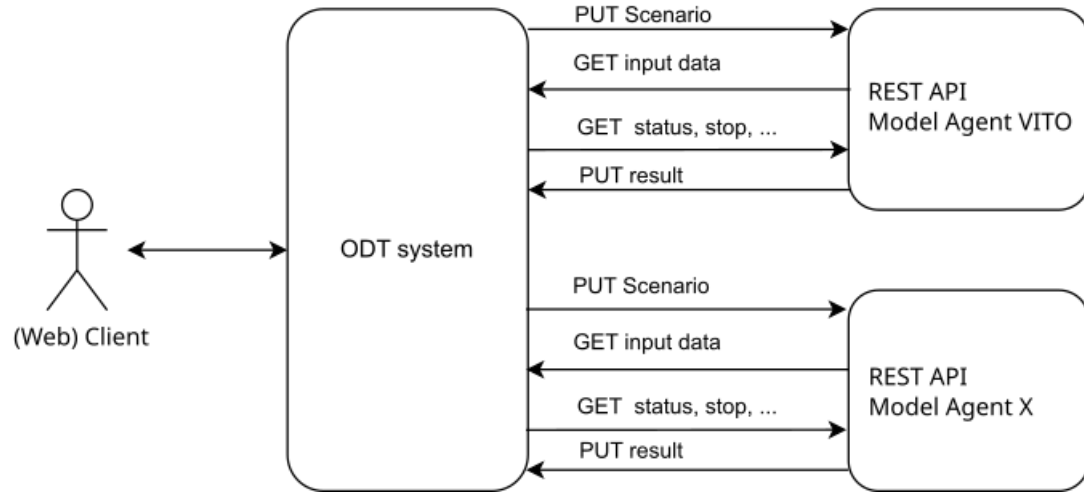
vito.be

Introduction Local Digital Twin





How to couple an air quality model to a digital twin?

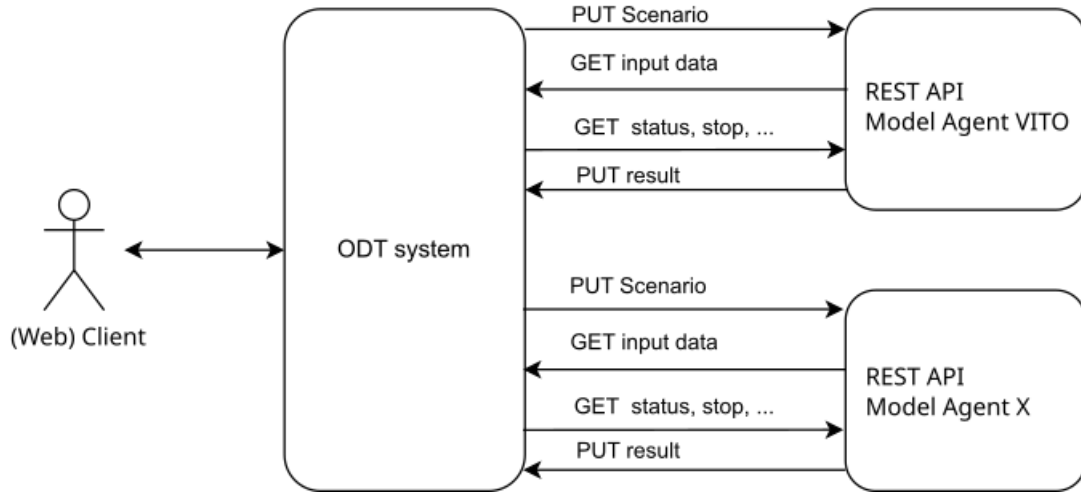


ODT = Open Digital
Twin

- **Standardization!**
- **Interoperability!**
- **Fast Simulations!**

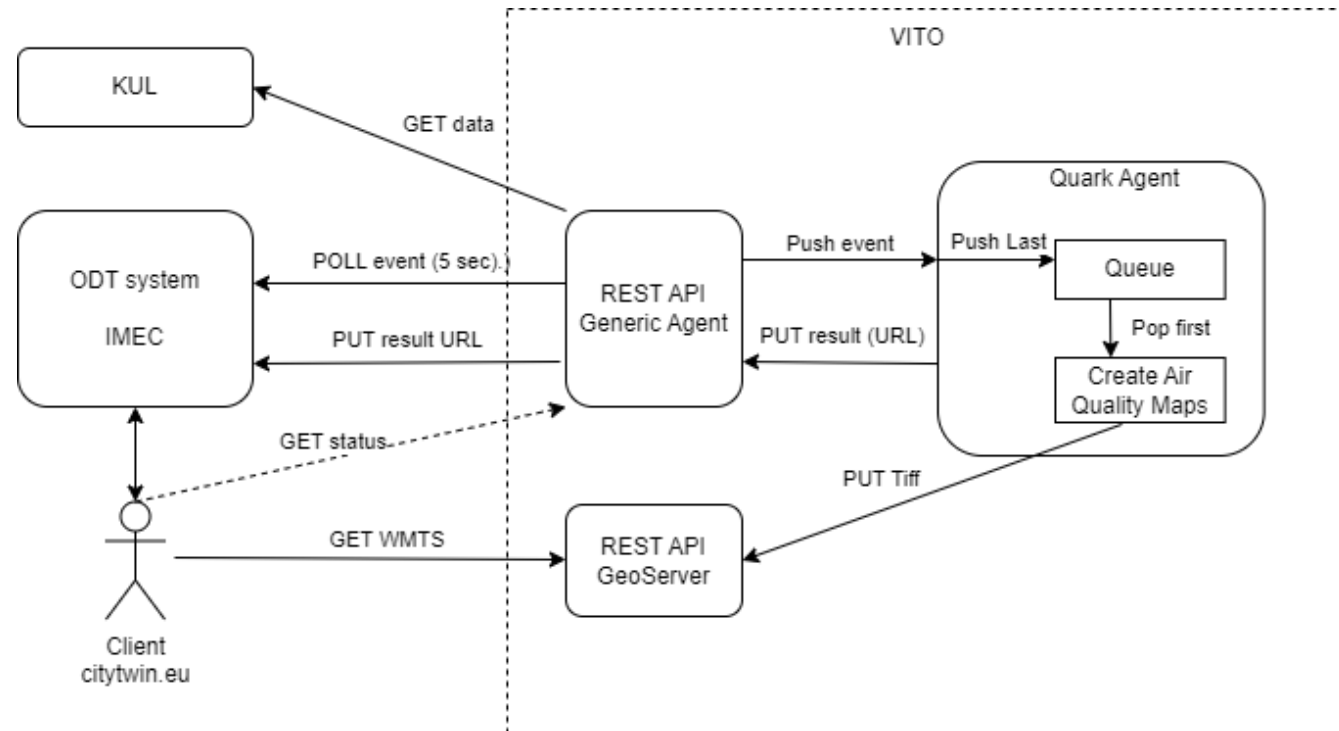
How to couple an air quality model to a digital twin?

Perfection?

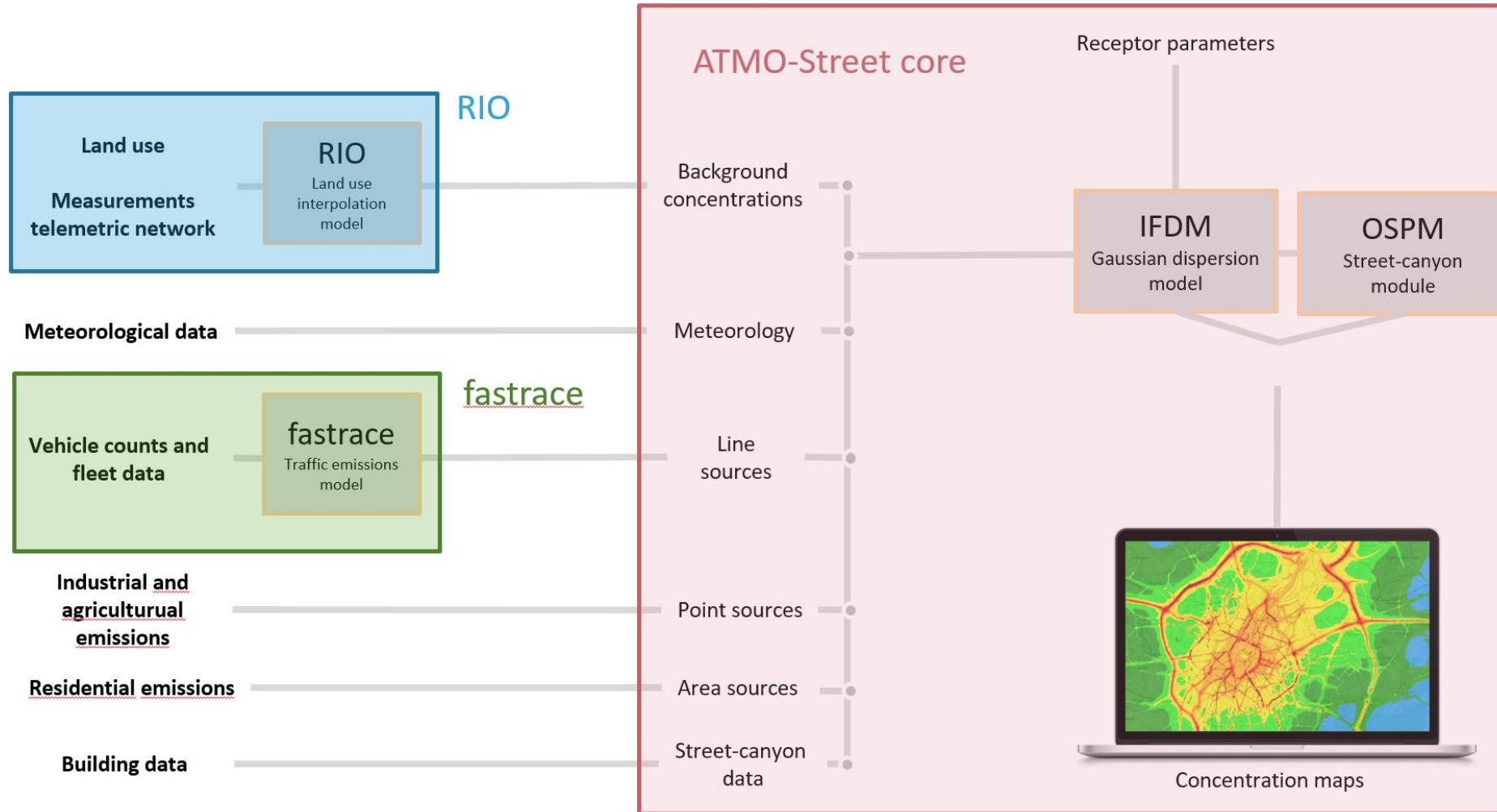


ODT = Open Digital Twin

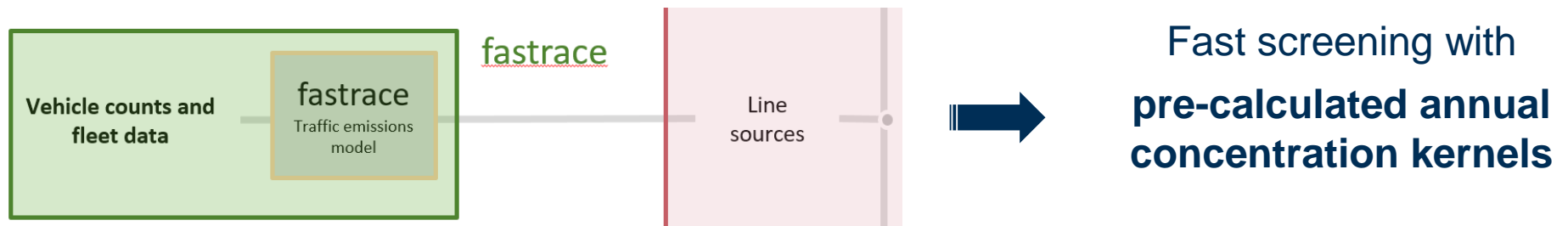
Reality?



Which Air Quality model to integrate?



Which Air Quality model to integrate?





More information?

<https://atmosys.vito.be/>

<https://urbreath.eu/>

Stijn.Vranckx@vito.be